

PART OF N.E. 1/4, SEC. 16, T.5 N., R.2 W., S.L.B. & M.
COUNTRY MEADOWS SUBDIVISION

201

TAXING UNIT 98

LOTS 30-36
 IN WEBER COUNTY

PREFIX: 09-201

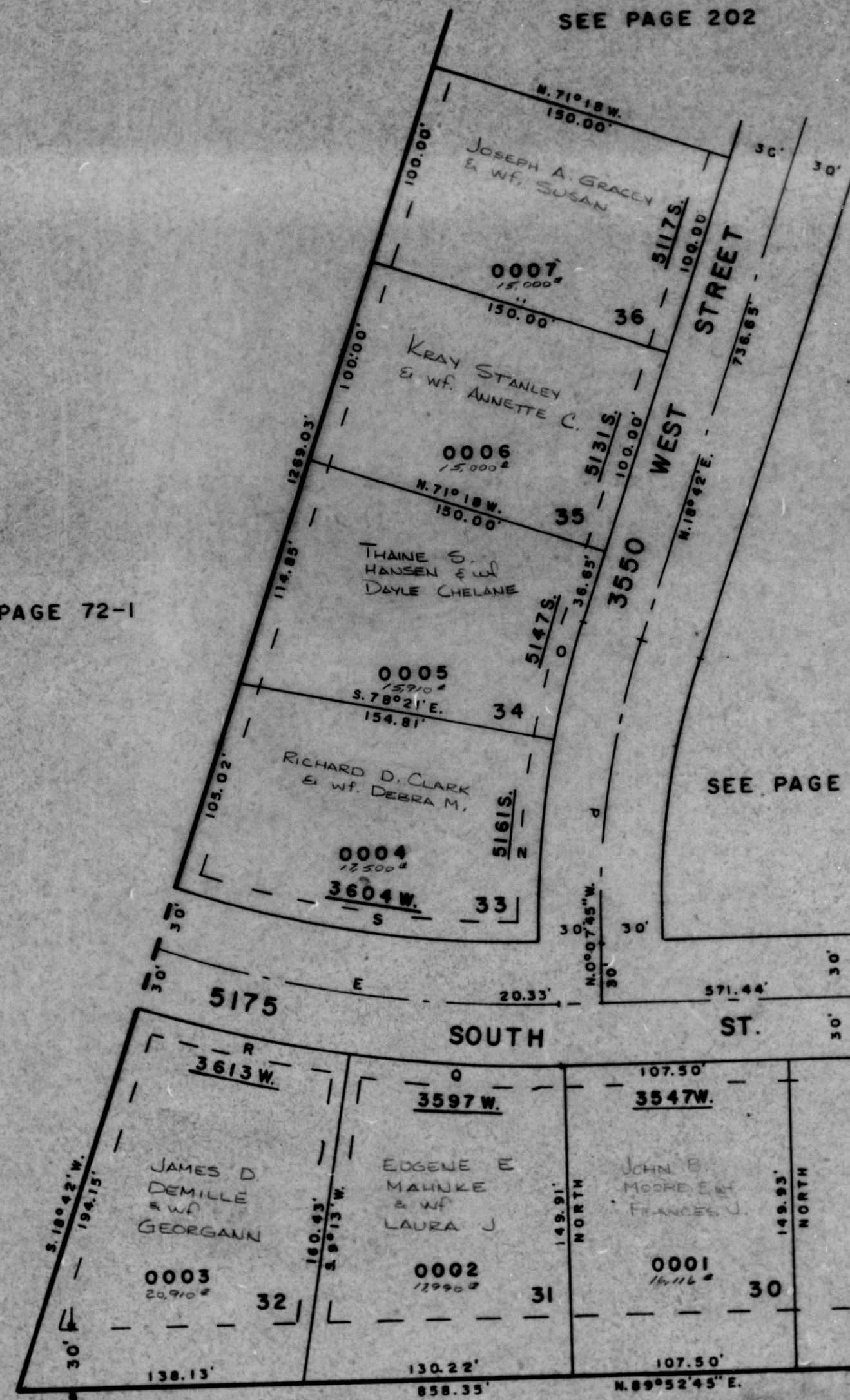
SCALE 1"=50'

SEE PAGE 202

EXCEPT WHERE OTHERWISE SHOWN
 ALL LOTS OWNED BY
 PELICAN OIL CORP.

SEE PAGE 72-1

SEE PAGE 198



(E)
 $\Delta = 18^{\circ}49'45''$
 $R = 603.10'$
 $L = 198.20'$
 $T = 100.00'$
 $LC = 197.31'$

(N)
 $\Delta = 11^{\circ}46'10''$
 $R = 482.32'$
 $L = 99.08'$
 $LC = 98.90'$

(O)
 $\Delta = 7^{\circ}03'$
 $R = 482.32'$
 $L = 59.35'$
 $LC = 59.31'$

(P)
 $\Delta = 18^{\circ}49'45''$
 $R = 422.32'$
 $L = 138.79'$
 $LC = 138.17'$

(Q)
 $\Delta = 9^{\circ}20'45''$
 $R = 633.10'$
 $L = 103.27'$
 $LC = 103.15'$

(R)
 $\Delta = 9^{\circ}29'$
 $R = 633.10'$
 $L = 104.79'$
 $LC = 104.77'$

(S)
 $\Delta = 17^{\circ}51'44''$
 $R = 573.10'$
 $L = 178.67'$
 $LC = 177.94'$

7' UTILITY & DRAINAGE
 EASEMENTS EACH SIDE OF
 PROPERTY LINES AS
 INDICATED BY DASHED
 LINES UNLESS SHOWN
 OTHERWISE

SEE PAGE 73

FOR COMPLETE ENG. DATA
 SEE ORIG. DEED. PLAT IN
 BOOK 21, PAGE 2

G.W.G.12-77